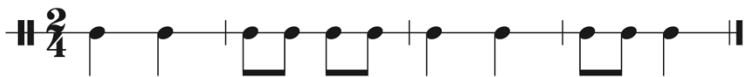

APPENDIX A: RHYTHM SUPPLEMENT

Rhythms in simple meters

1 

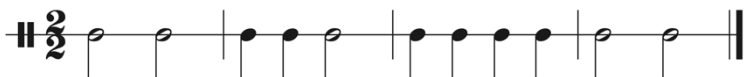
2 

3 


4 


5 

6 

7 

8 

9 

10 

11 $\text{||} \frac{4}{2}$

12 $\text{||} \frac{4}{2}$

13 $\text{||} \frac{2}{8}$

14 $\text{||} \frac{2}{8}$

15 $\text{||} \frac{3}{8}$

16 $\text{||} \frac{3}{8}$

17 $\text{||} \frac{4}{8}$

18 $\text{||} \frac{4}{8}$

19 $\text{||} \frac{2}{4}$

20 $\text{||} \frac{2}{2}$

21 $\text{||} \frac{2}{8}$

22 $\text{||} \frac{3}{8}$

23 3/4

24 4/2

25 3/2

26 4/4

27 4/8

28 3/8

29 3/4

30 2/4

31 C

32 3/2

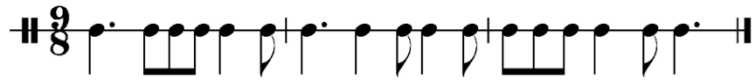
33 3/4


34 4/4

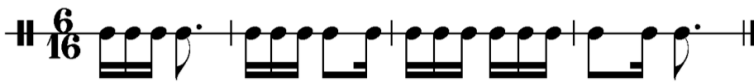
Rhythms in compound meters

71 

72 


73 

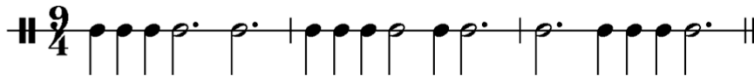
74 

75 

76 

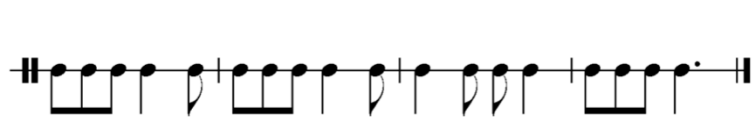
77 

78 

79 

80 



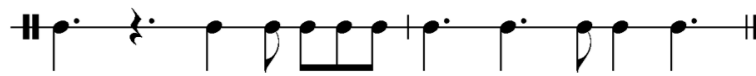
81 



82



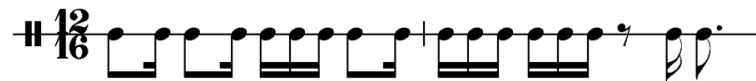
83



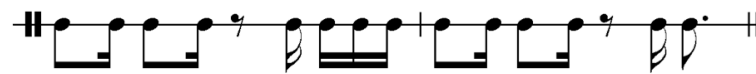
84



85



86



95 $\frac{9}{16}$

$\frac{6}{4}$

96

$\frac{9}{4}$

97

$\frac{12}{4}$

98


$\frac{12}{16}$

99

$\frac{6}{16}$

100

Rhythms in composite meters

- 101 $\text{||} \frac{5}{4}$  ||
- 102 $\text{||} \frac{8}{8}$  ||
- 103 $\text{||} \frac{5}{4}$  ||
- 104 $\text{||} \frac{5}{4}$  ||
- 105 $\text{||} \frac{8}{8}$  ||
- 106 $\text{||} \frac{5}{4}$  ||
- 107 $\text{||} \frac{8}{8}$  ||
- 108 $\text{||} \frac{8}{8}$  ||
- 109 $\text{||} \frac{7}{8}$  ||
- 110 $\text{||} \frac{7}{4}$  ||
- 111 $\text{||} \frac{7}{4}$  ||
- 112 $\text{||} \frac{8}{8}$  ||
- 113 $\text{||} \frac{8}{8}$  ||
- 114 $\text{||} \frac{10}{8}$  ||
- 115 $\text{||} \frac{10}{8}$  ||