

EXERCISE 10-1 Seventh chords in context

For each of the seventh chord types, spell the indicated chord and study its use in the example that follows.

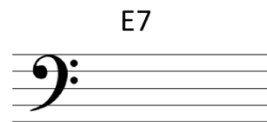
MA7 [major triad + MA7 between root and 7th]. Below or on a separate sheet of staff paper, spell a MA7 chord with D-flat as the root.



Listen to the D-flat major seventh chord in Worksheet example 10-1.

Worksheet example 10-1. Coldplay, "Sparks," 0:10–0:37 (audio)

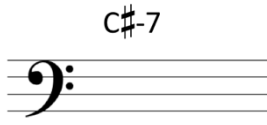
MAmi7 [major triad + mi7 between root and 7th]. Below or on a separate sheet of staff paper, spell a MAmi7 chord with E as the root:



Listen to the E major-minor seventh chord in Worksheet example 10-2.

Worksheet example 10-2. Roy Orbison, "Oh, Pretty Woman," 0:00–0:21 (audio)

mi7 [minor triad + mi7 between root and 7th]. Below or on a separate sheet of staff paper, spell a mi7 chord with C-sharp as the root:



Find the C-sharp minor seventh chord in Worksheet example 10-3.

Andante. Op. 62 Nº 1.

Worksheet example 10-3. Frederic Chopin, Nocturne in B major, op. 62, no. 1, mm. 1–4

$\emptyset 7$ [diminished triad + mi7 between root and 7th]. Below or on a separate sheet of staff paper, spell a $\emptyset 7$ chord with F as the root.

$F\emptyset 7$

Now, respell this chord using enharmonic equivalents for the third, fifth, and seventh. The respelled chord should have F as the root and no flats modifying any of the notes.


Find the respelled version of the $F\emptyset 7$ chord in Worksheet example 10-4. (Notice that the chord is respelled in order to avoid flats in this example.) Another half-diminished seventh chord appears in m. 6. This chord is also respelled with enharmonic equivalents. If it were spelled in the traditional way, what the root of this chord be?

Langsam und schmachtend.

Worksheet example 10-4. Richard Wagner, Prelude to *Tristan und Isolde*, mm. 1–7, orchestral reduction

o7 [diminished triad + d7 between root and 7th]. Below or on a separate sheet of staff paper, spell a o7 chord with F-sharp as the root:

F#o7



Find the F-sharp fully-diminished seventh chord in Worksheet example 10-5.

Adagio.

Violino I
concertino e ripieno.

Violino II
concertino e ripieno.

Viola.

Violoncello
concertino e ripieno
e Basso continuo.



attacca

Worksheet example 10-5. Arcangelo Corelli, Concerto Grosso in B-flat major, op. 6, no. 11, mvt. 3, mm. 1–9, accompanimental string parts only