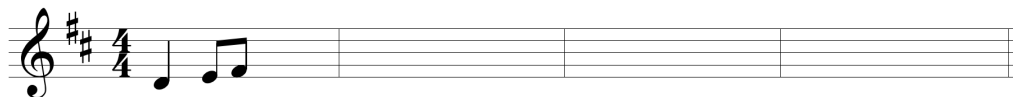


EXERCISE 18-2 Creating melodic sequences

Given the model, create a tonal melodic sequence by adding one or two legs and then complete the melody logically (following the principles we've studied in [Chapter 15](#)) in the blank measures that follow. First determine the most logical key, based on the key signature and other musical cues. Each melody should end on tonic. Bracket and label the model and each leg of the sequence. The first is done for you.

EXAMPLE. The given model:



The completed sequence:

