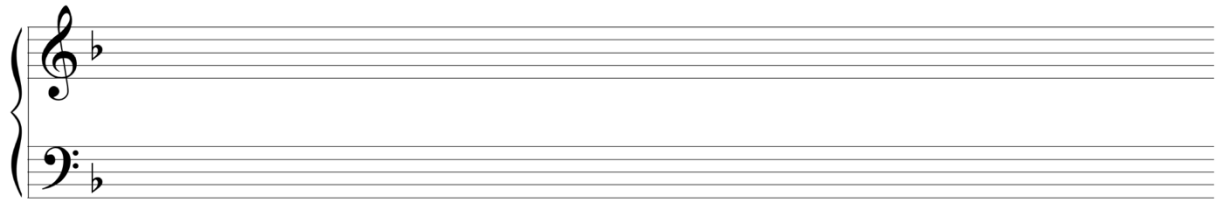
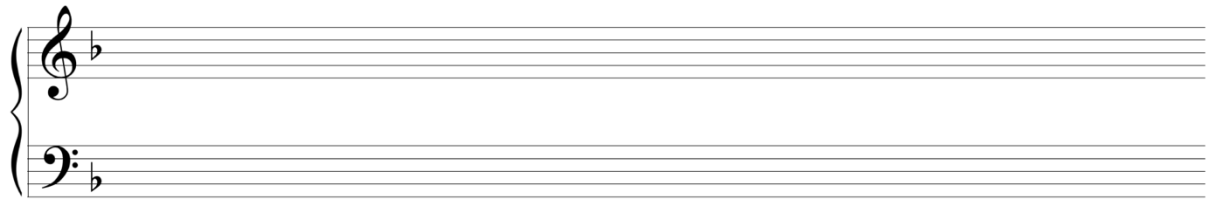


EXERCISE 41-7 Contextual listening with Radiohead, “A Wolf at the Door”

Transcribe as much as possible of the first sixteen seconds of Worksheet example 41-3. Provide the key, time signature, and measure lines. Be sure to notate both the arpeggiated chordal parts as well as the bass, which begins about nine seconds into the clip. After completing the transcription, provide a Roman numeral analysis of the implied harmonies beneath the staff and answer the questions that follow.



KEY: ____:



Worksheet example 41-3. Radiohead, “A Wolf at the Door,” 0:00–0:16 (audio)

URL: <https://open.spotify.com/track/66cuLvKhsW7dNkfNk6gQP9?si=c84967b89b7f4ad3>

1. What type of meter best characterizes this song?

2. There is a chromatic chord in this excerpt. In what measures does it occur? _____
What is the harmonic function of this chord? _____
3. Describe the voice leading of the bass line.

What are the implications for this type of bass line in terms of chord voicing?