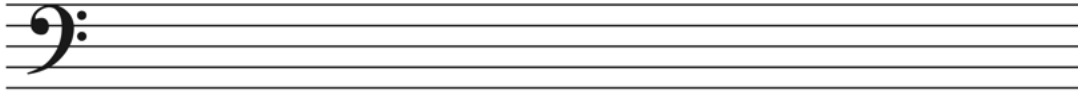


## EXERCISE 8-3 Phrygian in context

The phrygian scale is like natural minor with a lowered scale-degree 2 (ra).

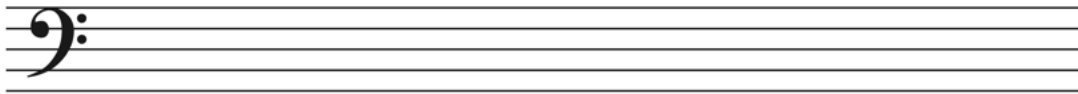
**G phrygian.** After writing the G phrygian scale below or on a separate sheet of staff paper, listen to and study its use in Worksheet example 8-9 and Worksheet example 8-10.



**Worksheet example 8-9. Benjamin Britten, “In Freezing Winter Night,” opening**

**Worksheet example 8-10. Brian Eno, *Neroli***

**C-sharp phrygian.** After writing the C-sharp phrygian scale below or on a separate sheet of staff paper, listen to and study its use in Worksheet example 8-11.



*♩* = 80 *mf*

Lead Vocal

Where is the line \_\_\_ with you? Where is the \_\_\_ line \_\_\_\_\_ with you? Where is the

Growling Bass

*p*

4

Lead

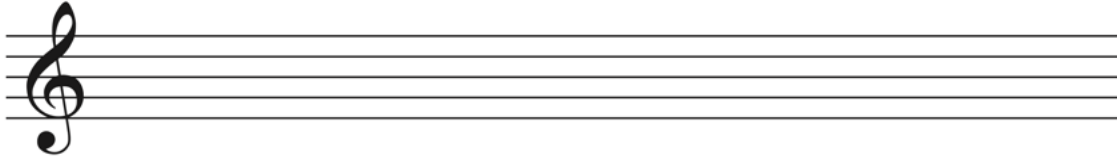
line \_\_\_ with you Where is the \_\_\_ line \_\_\_\_\_ with \_\_\_ you? \_\_\_

Bass

*mp*

**Worksheet example 8-11. Transcription of Björk, “Where Is the Line,” 0:00–0:19**

**A phrygian.** After writing the A phrygian scale below or on a separate sheet of staff paper, listen to and study its use in Worksheet example 8-12. This example features the descending phrygian scale, and lowered scale-degree 2 occurs on the word “seek” and the first syllable of “Amy.”



**Worksheet example 8-12. Britney Spears, “If U Seek Amy,” 0:45–1:00**