

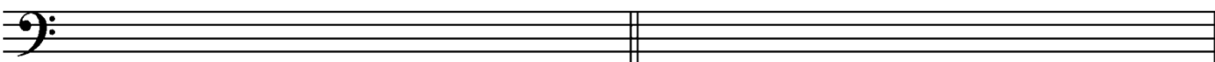
## EXERCISE 8-7 Modes & scales

Construct the scales on the staves below or on a separate sheet of staff paper. Bracket the location of all half steps.



F mixolydian

B $\flat$  lydian



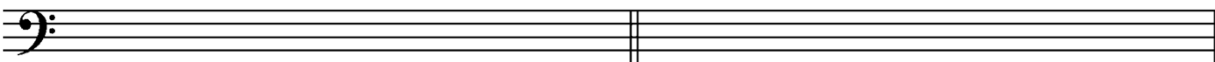
G dorian

A phrygian



D lydian

E phrygian



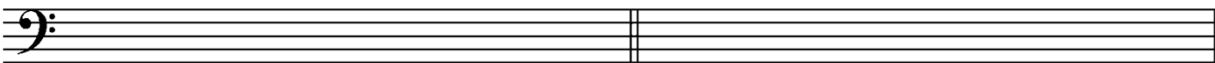
B dorian

C $\sharp$  phrygian



E $\flat$  mixolydian

G lydian



A $\flat$  whole tone

A major pentatonic



E minor pentatonic

C $\sharp$  whole tone