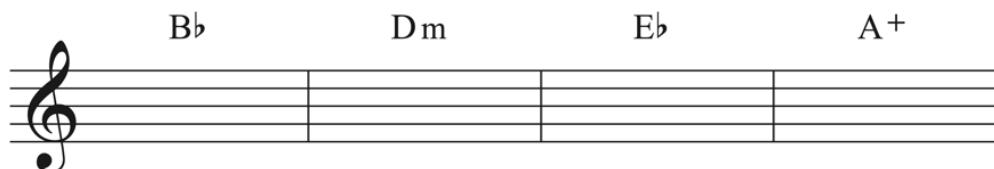


EXERCISE 9-2 Triads in context

Given the chord symbols above the staff, spell each chord and then listen to the progression featured in the following examples.

Worksheet example 9-2 features the following triads in a repeating progression: B-flat major, D minor, E-flat major, and A augmented.




A musical staff in treble clef divided into four measures. Above the staff, the chord symbols B \flat , Dm, E \flat , and A $^+$ are centered over each measure respectively.

Worksheet example 9-2. Muse, "Blackout," 0:12–0:36 (audio)

Listen to the full track on [Spotify](#).

Learn about British alt-rock band Muse by reading this IMBd [article](#).

Worksheet example 9-3 features the following triads: C minor, B diminished (which repeat twice), A-flat major, E-flat major, and F major.



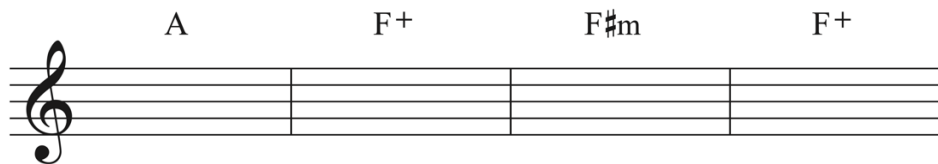
A musical staff in treble clef divided into five measures. Above the staff, the chord symbols C m , Bdim., A \flat , E \flat , and F are centered over each measure respectively. The first and second measures are marked with repeat signs (double dots and vertical lines).

Worksheet example 9-3. Broken Bells, "Sailing to Nowhere," 0:15–0:29 (audio)

Listen to the full track on [Spotify](#).

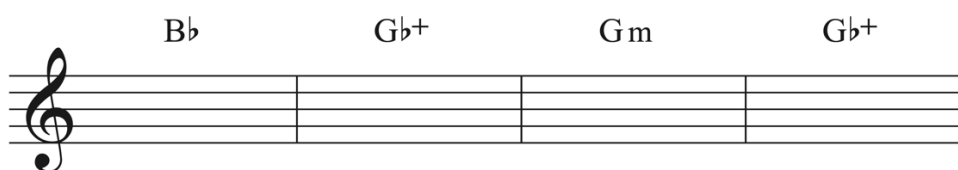
Learn about 21st-century American indie rock duo **Broken Bells** by reading this last.fm [article](#).

Worksheet example 9-4 features the following triads in a repeating progression in the key of A major: A major, F augmented, F-sharp minor, F augmented.



Worksheet example 9-4. Robbie Dupree, “Steal Away,” 0:15–0:31 (audio)

Worksheet example 9-5 uses a similar progression, but instead appears in the key of B-flat major. It features the following chords: B-flat major, G-flat augmented, G minor, G-flat augmented.



Worksheet example 9-5. Sparklehorse, “Gold Day,” 0:12–0:33 (audio)

Listen to the full track on [Spotify](#).

Learn more about American singer-songwriter Mark Linkous (1962–2010), creator of Sparklehorse, by reading their [bio](#) at the artist’s website, written by Ally Carnwath.