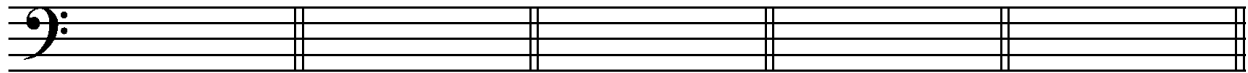


EXERCISE 47-1 Spelling dominant ninths and thirteenths

For each of the following, provide a key signature and realize the chord in four voices on the staff. All chords should be in root position, and the most extended note should be placed in the top voice.

Remember, in minor keys $V^{\flat 9}$ and $V^{\flat 13}$ chords require a raised leading tone, but the most extended note is already lowered. And in major keys, the $V^{\flat 9}$ and $V^{\flat 13}$ require lowering the most extended note.

Set 1



$D^{\flat}M: V^9$

$A^m: V^{\flat 13}$

$A^{\flat}M: V^{13}$

$E^m: V^9$

$G^m: V^{\flat 9}$

Set 2



$C^m: V^{\flat 9}$

$F^{\sharp}m: V^{\flat 13}$

$B^m: V^{13}$

$F^m: V^9$

$G^m: V^{\flat 13}$