

EXERCISE 7-3 Beaming

Beneath each example, re-notate the passage so that beaming conforms to the given meter. Whenever possible, durations within a beat group should be beamed together. The first is done for you.

EXAMPLE



Re-notated as:



(a)



Re-notated as:



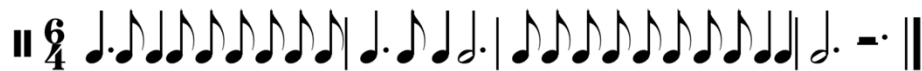
(b)



Re-notated as:



(c)



Re-notated as:



(d)



Re-notated as:

