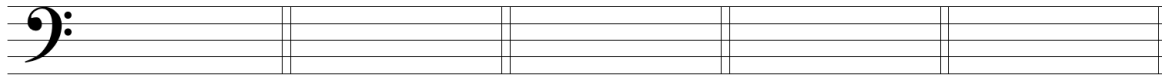


## EXERCISE 42-1 Spelling +6 chords

On the staff below or on a separate sheet of staff paper, provide key signatures for each problem and spell the augmented sixth chord. Remember in minor keys, the only chromatic note is scale degree sharp-4. In major keys, scale degrees 6 and 3 must be lowered by a half step, in addition to raising scale degree 4.



A mi: Fr.+6

B MA: Ger.+6

F mi: It.+6

G MA: Fr.+6

D mi: Ger.+6