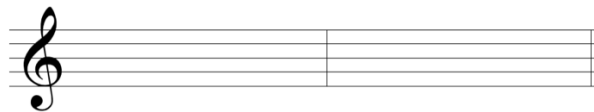


EXERCISE 44-1 Chord spelling and reinterpretation

Provide a key signature for each of the problems below, and spell the given chord. Then re-spell the chord and identify the new key. The first problem is done as a model.

MODEL



Cm: V⁷ = ___: Ger.+6

SOLUTION



Cm: V⁷ = B: Ger.+6

SET 1



Dm: V⁷ = ___: Ger.+6



Gm: Ger.+6 = ___: V⁷

SET 2



D^bM: V⁷ = ___: Ger.+6



CM: V⁷/V = ___: Ger.+6

SET 3



DM: Ger.+6 = ___: V⁷/V

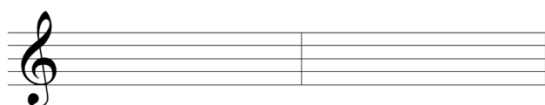


B^bm: Ger.+6 = ___: V⁷/V

SET 4



A^bM: V⁷ = ___: Ger.+6



Bm: Ger.+6 = ___: V⁷